

2000 SC
1200 SC

SELF CONTAINED DFS
AIR CLEANING SYSTEM

HW 950 P

**Commercial
Portable Air Cleaner**



Ecoair Cooling Systems Pvt. Ltd

Survey No. 279/ 1&2 Raison Industrial Park Hinjawadi, Phase-II Maan, Taluka-Mulashi, Pune - 411 057
Contact: H.O. 9922939101 | Email: sales@ecoair.co.in | service@ecoair.co.in | www.ecoair.co.in

2000 SC Self Contained DFS Air Cleaning System

HealthWay's DFS Technology (Disinfecting Filtration System) surpasses all other types of filtration. This revolutionary technology traps microorganisms such as bacteria, mold and viruses, reduces bioburden and inhibits microorganism's growth through Microbiostatic condition, resulting in the most powerful indoor air purification in the world.



SPECIFICATIONS

- Pre-drilled standing flanges to accommodate attachment to other system components
- Dual access door, swing-open type for filter service from either side
- High-memory sponge neoprene door gaskets to ensure door to filter seal
- Aluminum filter track design for 4" standard pre-filter and a track for High Energy Grid Frame
- A polypropylene fin seal on the main filter track to eliminate filter air bypass leakage

DIMENSIONS

Height – 26.125" (664 mm)

Width – 26.25" (667 mm)

Depth – 32 .125" (816 mm)

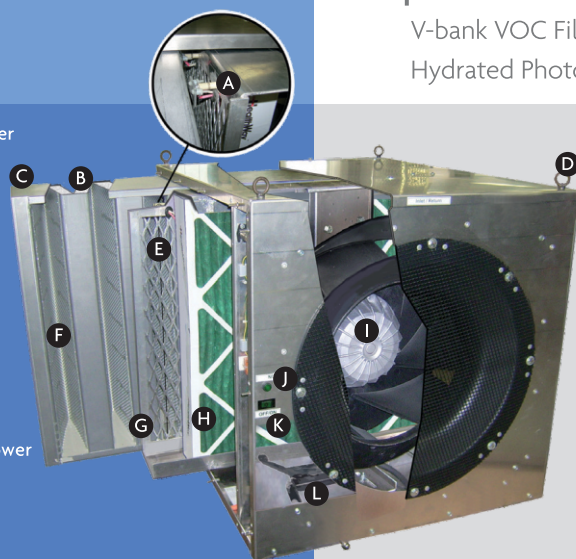
WEIGHT

153lbs (69.3kg)

FEATURES

- **High Air Flow Capacity** – Delivers high CFM with low energy consumption
- **Modular Design** – Allows for stacking of modules to meet any air flow capacity. Single Module capacity is 2000 CFM – Nominal flow.
- **99.99% Filtration Efficiency** – Down to a size of 0.007 microns
- **Self-Contained Design** – results in no pressure drop when installed on the Air handling unit
- **Independent Air flow/Distribution Control** – to facilitate Installation anywhere in the space
- **Patented V-Bank Filter** – increases surface area and provides higher dust loading capacity
- **Three times longer filter span** – compared to conventional HEPA Filtration – Lower Maintenance Cost
- **Housing Design** – provides a 100 % seal around the filter
- **Ease of Maintenance** – Filter access from either side
- **Seamless Integration** with Building Management System
- **Auto-Flow Monitoring** option to allow completely automated flow monitoring and filter replacement
- **Optional**
 - V-bank VOC Filter (70 lbs – Adsorbent Blend)
 - Hydrated Photo Catalytic Oxidation (HPCO) Odor-TVOC Cartridge

- A** High Energy Wire Retainer
- B** Pleated
- C** High Capacity V-Bank Main Filter
- D** Mounting Loops (4)
- E** High Energy Wires
- F** Energy Transfer Grid
- G** Ground Control Grid
- H** High Capacity Prefilter
- I** Sealed High Pressure Blower
- J** Operating Light
- K** On / Off Power Switch
- L** Filter Seal Adjusters (2)

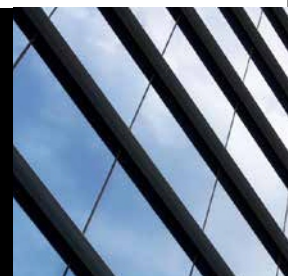


DFS 2000-SC / Power Requirements Per System

60 / 50Hz	60 / 50Hz	60 / 50Hz	60 / 50Hz	60 / 50Hz
2000SC-120-1A CFM-1500	2000SC-120-1B CFM-2000	2000SC-220-1 CFM-2000	2000SC-220-3 CFM-2000	2000SC-440-3 CFM-2000
5.4A / 4.9A	15.2A / 14.5A	7.6A / 6.8A	4.3A / 3.8A	2.6A / 2.1A
648W / 588W	1824W / 1740W	1672W / 1517W	990W / 874W	1144W / 924W

1200 SC Self Contained DFS Air Cleaning System

HealthWay's DFS Technology (Disinfecting Filtration System) surpasses all other types of filtration. This revolutionary technology traps microorganisms such as bacteria, mold and viruses, reduces bioburden and inhibits microorganism's growth through Microbiostatic condition, resulting in the most powerful indoor air purification in the world.



SPECIFICATIONS

- 12 gauge aluminum construction
- Pre-drilled standing flanges to accommodate attachment to other system components
- Dual access door, swing-open type for filter service from either side
- High-memory sponge neoprene door gaskets to ensure door to filter seal
- Aluminum filter track design for 2" standard pre-filter and a track for High Energy Grid Frame
- A polypropylene fin seal on the main filter track to eliminate filter air bypass

UNIT DIMENSIONS

Height – 23" (584 mm)

Width – 28" (711 mm)

Depth – 32" (813mm)

WEIGHT

190lbs (86 kg)

*weight includes the electrical box

FEATURES

- **High Air Flow Capacity** – delivers high CFM with low energy consumption
- **Modular Design** – allows for stacking of modules to meet any air flow capacity. Single Module capacity is 1200 CFM – Nominal flow.
- **99.99% Filtration Efficiency** – down to a size of 0.007 microns
- **Self-Contained Design** – results in no pressure drop when installed on the Air handling unit
- **Independent Air flow/Distribution Control** – to facilitate Installation anywhere in the space
- **Patented V-Bank Filter** – increases surface area and provides higher dust loading capacity
- **Three times longer filter span** – compared to conventional HEPA Filtration – Lower Maintenance Cost
- **Housing Design** – provides a 100 % seal around the filter
- **Ease of Maintenance** – filter access from either side of the unit.
- **Electrical Panel** – electronic components are contained in a separate electrical box (not shown)
- **Variable Frequency Drive (VFD)** – modulation of airflow and connectivity to Building Management Systems (BMS) for monitoring
- **Magnehelic Pressure Gauge** – monitoring of pressure differential across the filters
- **Optional**
 - Auto-Flow Monitoring
 - V-bank VOC Filter (70 lbs – Adsorbent Blend) Hydrated Photo Catalytic Oxidation (HPCO) Odor-TVOC Cartridge



DFS 1200-SC / Power Requirements Per System

Model	Power			FLA	Power Usage
	VOLTAGE	HERTZ	PHASE	AMPS	WATTS
1200SC-120-1	120	50/60	1	5.5/5	650/590
1200SC-220-1	220	50/60	1	2.7/2.2	585/495
1200SC-220-3	208-240	50/60	3	1.7/1.5	400/375
1200SC-440-3	380-460	50/60	3	1.1/0.9	485/435

HW 950P

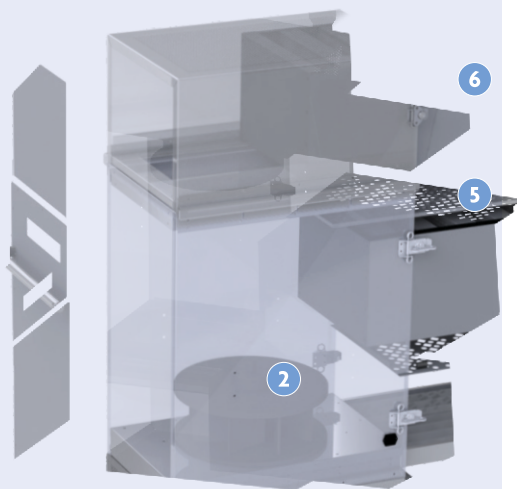
Commercial Portable Air Cleaning System



DIMENSIONS

	Height	Width	Depth	Weight
Main Unit	44"	18"	28"	155 lbs
	1,118 mm	457 mm	711 mm	70 kg
With VOC Filter*	57"	18"	28"	229 lbs
	1448 mm	457 mm	711 mm	104 kg

*optional



FEATURES

- **High Air Flow Capacity** – delivers high CFM with low energy consumption
Airflow Rate - 950 CFM (Nominal) Equals to 1614 m³/h
- **Mobile Design** – built in 3.5" safety lock swivel casters, full width handle for easy movement
- **Multiple Fan Speeds** – four fan speeds for ease of control
- **99.99% DFS Filtration Efficiency** – down to a size of 0.007 microns
Better than HEPA efficiency in capturing particles down to viruses level sizes
- **Independent Air flow/Distribution Control** – to facilitate placement anywhere in the space
- **Patented V-Bank Filter** – increases surface area and provides higher dust loading capacity
- **Three times longer filter span** – compared to conventional HEPA Filtration – Lower Maintenance Cost
- **Housing Design** – 5052 painted marine grade aluminum, provides a 100% seal around the filter
- **Ease of Maintenance** – quick release filter access from the back side of the unit
- **Optional**
V-bank VOC Filter (54 lbs – Adsorbent Blend) Hydrated Photo Catalytic Oxidation (HPCO) Odor-TVOC Cartridge

SPECIFICATIONS

- 12 gauge aluminum construction
- Butterfly Latch back door for access
- High-memory sponge neoprene door gaskets to ensure door to filter seal
- Aluminum filter track design for 2" standard prefilter and a track for High Energy Grid Frame
- A polypropylene fin seal on the main filter track to eliminate filter air bypass
- Designed for continuous operation
- Operates at 120 V/220 V

PART LIST

1. Pre-filter
2. Blower
3. High Energy Grid PATENTED DFS TECHNOLOGY
4. Main V-Bank Filter
5. VOC Filter (used when optional VOC V-Bank is not added)
6. VOC V-Bank Filter (Optional) PROPRIETARY VOC BLEND

POWER REQUIREMENTS (PER SYSTEM)

Power Requirements			Power Usage	Air Flow Capacity			
V	Hz	Phase		Low	Medium	120	120
120	50/60	1	560	357 m ³ /hr	705 m ³ /hr	1070 m ³ /hr	1614 m ³ /hr
				210 CFM	415 CFM	630 CFM	950 CFM
220	50/60	1	560	357 m ³ /hr	705 m ³ /hr	1070 m ³ /hr	1614 m ³ /hr
				210 CFM	415 CFM	630 CFM	950 CFM

HealthWay
healthway.com